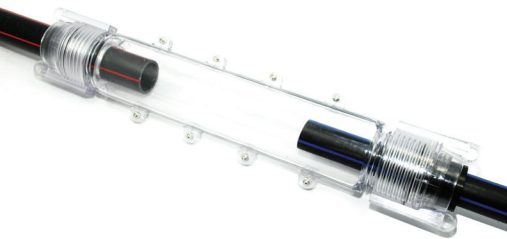


# Microduct tubes and HDPE pipes accessories

## Divisible straight/reducing joints H-ZD for HDPE pipes



- >>> Material: high-quality plastic
- >>> Divisible construction
- >>> Transparent body
- >>> Tool-free assembly
- >>> Reusable
- >>> Waterproof, dustproof
- >>> UV resistant
- >>> Resistance to substances occurring in duct systems

### Equipment:

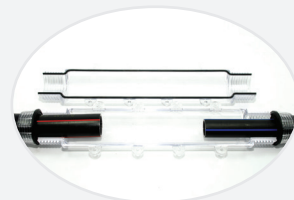
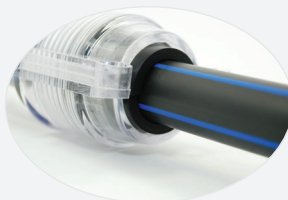
- >>> Divisible joint/connector
- >>> Rubber fixing gaskets
- >>> Sealing screws

### Application:

- > Protection of fiber optic splice sleeves from external factors
- > Connecting HDPE pipes with the same and different diameters
- > Connecting microduct tubes guided in bundles or multi-tubes
- > Duct systems, directly in the ground, above the ground, wells

Product ID	Outer pipe diameter [mm]	External dimensions [mm]	Internal dimensions [mm]	Type of joint	Weight [kg]
H-ZD.25-25	25/25	490x105x70	310x61x61	Straight	0.4
H-ZD.32-32	32/32	490x105x70	310x61x61	Straight	0.4
H-ZD.40-40	40/40	490x105x70	310x61x61	Straight	0.4

Product ID	Outer pipe diameter [mm]	External dimensions [mm]	Internal dimensions [mm]	Type of joint	Weight [kg]
H-ZD.32-25	32/25	490x105x70	310x61x61	Reducing	0.4
H-ZD.40-25	40/25	490x105x70	310x61x61	Reducing	0.4
H-ZD.40-32	40/32	490x105x70	310x61x61	Reducing	0.4



## Universal joint H-ZD2 for HDPE pipes, diameters 25-50 mm



- >>> Material: high-quality plastic
- >>> Divisible construction
- >>> Colour: black
- >>> Tool-free assembly
- >>> Reusable
- >>> Waterproof, dustproof
- >>> UV resistant
- >>> Resistance to substances occurring in duct systems

### Application:

- > Protection of fiber optic splice sleeves from external factors
- > Sealing damaged pipes in the ground
- > Connecting HDPE pipes with the same and different diameters
- > Connecting microduct tubes guided in bundles or multi-tubes
- > Duct systems, directly in the ground, above the ground, wells
- > For pipes with a diameter range of 25-50 mm

Product ID	Pipe diameter range [mm]	External dimensions [mm]	Internal dimensions [mm]	Diameter of inlet holes [mm]	Weight [kg]
H-ZD2	25-50	620x160x110	452x110x100	50	0.6

**W zestawie:** >>> Divisible joint/connector >>> Conical mounting gaskets >>> Fixing bands

